



Vol. 3, is. 3

Sept. 10, 2003

Free online publication available on the ITALE web site for the Aleph Community ([www.itale.it](http://www.itale.it)). Special issues are published and distributed during national and international meetings.

Editorial Board:  
ITALE Committee  
c/o Via Balbi, 5  
16126 GENOVA-Italy  
Editorial project and editing:  
Fiorella Liotto [flotto@exlib.it](mailto:flotto@exlib.it)

© Copyright ITALE

# NEWSLETTER

## COLLABORATORS FOR THIS ISSUE:

Alessandra Bezzi  
Liliana Bernardis  
Margaret D'Ambrosio  
Fiorella Liotto  
Michel Luetgen  
Mauro Narbone  
Daniele Nottegar  
Antonio Scolari  
Paolo Tealdi  
Antonella Trombone

Special issue

Published for the 14th

# ICAU

Meeting in Vienna  
Sept. 22-24, 2003

For ITALE members only:

Further documentation available on the reserved area (pw protected) of the ITALE web site:

[www.itale.it](http://www.itale.it)

## FROM PARIS TO VIENNA

### A year of intense activity

One year after the Paris meeting, here we are with an accounting of the activities of this Italian national group. It is most assuredly a positive summary, the more so as the result of ITALE's reorganization and the creation of a Comitato di Coordinamento (composed of five members, among which is the association's president) based on the model of ICAU's organizational structure.

ITALE, through also its rapport with ICAU, assumes a strategic role of direction and confrontation among the Italian ALEPH users and the national and international scene, with the software distributors and producers and users world-wide. Currently ITALE gathers together 37 institutions, among which are those university-related, institutes of public and private research, and public library systems.

One of the first tasks achieved by ITALE last November was the decision to migrate to Version 15.2. At Pontignano the following month, on the occasion of the second ITALE Workshop, Barbara Rad-El of Ex Libris introduced the new functionalities of this version. During the spring and summer the Politecnico di Torino and the Università di Udine coordinated testing of the new version on a dedicated server placed at their disposal by SUN Microsystems. Additionally, together with our national distributor, Atlantis, we agreed on a close cooperation for the national-level planning of the migration process. Special attention was dedicated to the verification of a functionality which permits the support of the UNIMARC standard. It is important to note that ALEPH500 is "unique" as a product, aligning all functionalities for all supported standards, MARC21, MAB and UNIMARC.

Ten technical seminars are on the agenda for the two year period, 2003-2004. Already many years ago the then "gruppo italiano utenti aleph" evolved into the more official form of "associazione". (The first seminar was held way back in '96!). These seminars represent great value for the Italian user community. They are held in diverse locations, and the structure is composed of technical and "scientific" presentations. The notable success of the first two seminars (with an enrolment of upwards of 80 participants) is proof of their usefulness as a valuable occasion for meeting, comparing, exchanging and sharing experiences among the Italian ALEPH users. The seminars are without cost, and are open also to those outside the ITALE membership.

The complete program of seminars is available to all at the Web



A long road travelled during this year...

site ([www.itale.it](http://www.itale.it)). The relevant documentation, however, is only available in an area restricted to ITALE members. Currently the site is undergoing a change in structure, in accordance with a project of "restyling" and a total content reorganization, with the objective of rendering the site a more and more efficient working tool for all members. At the same time work is going forward fully with the editorial activity involved in the publication of the association's newsletter.

Among the projects of national interest on which ITALE has worked in the past year are noted the achievement of an Italian ALEPH union catalog, and the progress Atlantis and Ex Libris have made toward creating a prototype of a dialog between ALEPH and SBN Indice 2. A third project under study at the moment is the automatic transfer of data from ALEPH libraries to the Italian periodicals catalog ACNP (<http://www.cib.unibo.it/acnp/>). Both of these projects foresee a notable reduction of time spent on cataloging, management, and users services, above all, that of interlibrary loan (ILL).

In conclusion, a long road travelled during this year! [A.B.]

## TESTING ALEPH 15.2



Seminario  
Genova, 16 - 17 giugno 2003

La sperimentazione della versione 15.2



Paolo Tealdi - Politecnico di Torino  
Liliana Bernardis - Università di Udine

Results presented during the ITALE Seminar held in Genoa on June, 2003

Politecnico di Torino and University of Udine, in collaboration with SUN microsystem ITALIA, that gave us one of their test servers, are carrying on a trial test on ALEPH 15.2 release. It has been installed by Atlantis, our local distributor, in May and now each ITALE user can install the client and test it. With some very interested users we are carrying on a complete test on each ALEPH function, both on the client side (every module) and on the server side (tables, web, authority, z39.50 server, etc). The test will end on June, 30<sup>th</sup>; then, we will distribute a detailed

document with our comments. Each function will be tested with regard to the following aspects: features that worked on 14.1 and that must work also on 15.2; critical problems on 14.1 that should be resolved on 15.2; last, but not least, new features.

We have been testing the 15.2 version for a few days: at the moment the most impressive findings are the client stability and improvement, especially the completely redesigned circulation module and the web server: frameless and apache integrated, noticeable more speedy [P.T.]

PHOTO GALLERY OF THE ITALE SEMINARS 2002-2003



OPEN PROBLEMS  
TWO COLLABORATIVE ITALE PROJECTS

Antonio Scolari  
[ascolari@unige.it](mailto:ascolari@unige.it)

Two significant collaborative projects involving the Italian ALEPH users were discussed during the two general members' meetings held in 2003:

-- collaboration with the Servizio Bibliotecario Nazionale (SBN)

-- realization of a union catalog composed of Italian ALEPH catalogs.

Both projects were also deliberated with Atlantis s.r.l., the Italian distributor of ALEPH software.

SBN is the union catalog of the Ministero per i Beni Culturali e Ambientali, in which hundreds of Italian university, state and public libraries participate. Until now it functioned with a closed tech-

nology which did not permit cooperation with software not specifically developed for itself. However, at the end of 2002 an announcement was made of its opening to other commercial software. Therefore, it will become possible for ALEPH libraries to collaborate in SBN by means of the addition of a functionality specific to the GUI client. Searching in SBN and importing in draft cataloging mode of UNIMARC records will result in localization of the record imported and the URL link for the record to its ALEPH catalog. Atlantis is currently working on the requested functionality which will be integrated into the GUI client by Ex Libris.

A second collaborative initiative with SBN concerns ILL (interlibrary loan). Given that SBN uses the ISO/ILL protocol, it would be possible to make this service interoperative with the ALEPH ILL module. The Italian ALEPH installations' migration to the Version 15.2 was foreseen for

2004, but Ex Libris not long ago announced the release of the ISO/ILL module for Version 15.5, limited to the American market. Given the importance of the possible collaboration with SBN, Itale has assumed the task of discussing with Atlantis and Ex Libris the feasibility of having at least one ISO/ILL module test site.

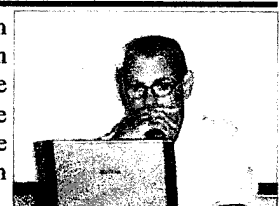
The second project concerns the possibility of creating, in collaboration with Atlantis, an ALEPH union catalog, which would permit end users to obtain, by means of access to a single site, data from numerous prestigious Italian university and specialized libraries. At the invitation of Atlantis Michel Luetgen (Ex Libris Germany) has participated in two Itale technical seminars, presenting the various options for a union catalog offered by ALEPH. ITALE is currently evaluating the most interesting and economically feasible option to achieve a first union catalog prototype.[A.S.]

## THE ITALIAN LIBRARY PORTAL



**Michel Luetgen**  
Ex Libris, Germany

The proposal is related to the constitution of a Portal of the Italian Libraries which are using ALEPH both in version 500 and in version 300. The model is based on the creation and the automatic maintenance of a union catalog constructed with the contribution of all catalogs of the single adherent institutions. In the presentation are briefly described the techniques and the possible algorithms of deduplication for the creation and the maintenance of the catalog. The main aim of the project is to achieve a qualified copy-cataloguing source for the direct import of the records. Other advantages can derive from the set up of a central Authority database and from the sharing of other external sources of data.



**Mauro Narbone**  
Atlantis srl [www.libris.it](http://www.libris.it)

From the point of view of the OPAC the unified catalogue constitutes the nucleus of a multi-resources system that allows the simultaneous search in on all the resources of common interest and/or the link to a particular one of them. The preliminary plan for the realization of the project forecasts one year for the required time to go into production with the Portal.[M.L.—M.N.]

## PROTOTYPE OF THE CLIENT ALEPH500

## TO COMMUNICATE WITH THE INDEX 2

The new SBN-MARC protocol gives the possibility to third-party software to communicate with the Indice 2. The functionalities included in the last version of the protocol are the search, the creation of new records, the records modification, the localization and the de-localization, the upload and the download from the index and the alignment. During the presentation we show a client prototype with the search and localization functions.

The search is a service to find the information stored in the indice and to verify if the searched object is present; the localization is used to send to the indice the information about the element or the document availability in the local system to give to the user this information.

With the client you can browse an index authority file; when you have selected the searched item the program gets and displays all the documents linked to it

The documents are transparently converted from the XML into an Unimarc format directly uploadable in ALEPH 500.

The localization function sends to the server the SBN code (polo code + library code), getting from the server the notification of the operation and if it fails or not. [D.N.]



**Daniele Nottegar**  
Atlantis srl [www.libris.it](http://www.libris.it)



## GREETINGS FROM BARBARA RAD-EL

[Barbara Rad-El presented the news of Aleph500, v. 15.2 during an ITALE Seminar held in the Certosa di Pontignano (Siena) in December 2002. ITALE members were very happy to receive the following notes that Barbara sent us after the Seminar, and that were published in the issue of the Newsletter that was edited after the Seminar]

My first meeting with an 'Italian ALEPH User' was in 1989. At that time I was the ALEPH System Librarian at the Tel Aviv University. At Ex Libris' request I took some days leave from my work at the University and went - under the auspices of Atlantis s.r.l. - to give training at the Scuola Normale Superiore in Pisa. I have, therefore to give the title of No. 1 ALEPH user in Italy to the head of this library - Dottoressa Sandra di Majo.

This was the first of several journeys to Italy to demonstrate and give training in ALEPH. During this period I visited some of the Pontifical Colleges in Rome, as well as the Universities of Udine, Genoa and Cozensa.

Ex Libris and Atlantis were successful in marketing ALEPH to many University libraries, and as the number of Italian users grew, so it became apparent that there was a need for an Italian speaking librarian to give training and support to this growing number of ALEPH users. Sadly for me, this meant the end of my professional visits to Italy.

By this time I had left Tel Aviv University and was employed on a full time basis by Ex Libris. This gave me the opportunity to continue to meet many of the Italian users - first at the ICAU Meetings, and after that at the biennial ALEPH System Seminars.

It was with great pleasure that I saw the increasing number of Italian ALEPH users - to the point where it was decided to form a National Users group. Many of the librarians that I had met in my early travels to Italy were actively involved in the forming of this group.

The ITALE group has been very successful in working together in promoting development requests that were important and relevant for Italian users. Previous to the present day mechanism of the ICAU Request Database, Ex Libris developed an Inventory Report required by Italian libraries in order to be able to report on the inventory of the library. A number of other developments of specific use for the Italian market have been implemented. In addition there has been significant development relating to the UNIMARC cataloging rules.

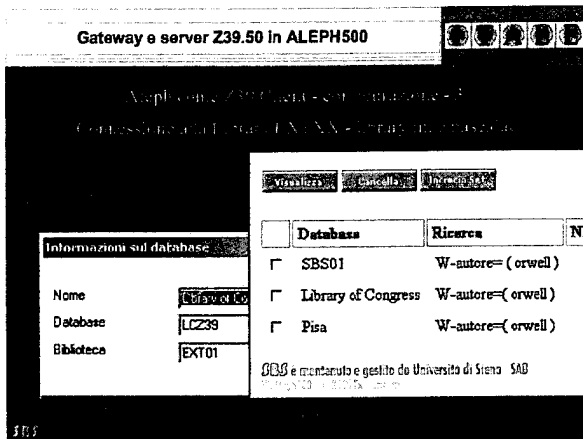
And during these years, the libraries migrated from ALEPH 100, to 200, to 300 and of course to 500....

Many of the Italian libraries intend to migrate to version 15.2 of ALEPH 500 during 2003. For this reason, I was invited to attend the recent ITALE workshop in the beautiful setting of Certosa di Pontignano in order to point out the main features and advantages of this version. Approximately 50 librarians attended the session, and I found the interest and questions about the features of the new version to be most stimulating.

*Barbara*

# GATEWAY Z39.50 SERVER IN ALEPH500

## PARAMETERS, EXPERIMENTS, AND PROPOSALS



This presentation described the necessary steps to configure the Z39.50 client and server in ALEPH 500, Version 14.1.: that is, a global overview of relevant files and tables needing configuration and personalization.

It was deemed advisable that all ALEPH installations go forward with the activation of the client functionality (included in the ALEPH 500 license), thus permitting local catalogers to use the various functionalities of copy cataloging and localization of data (including non-ALEPH databases).

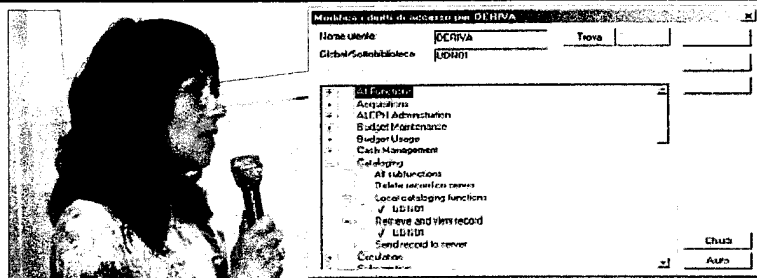
A further recommendation: that ALEPH sites acquire an added license for a Z39.50 server, thus granting to external sites the possibility of communicating with one's own.

The configuration of a Z39.50 target can also be done on the Web for end-user researches, permitting with one search a query of more than one catalog.

Fabrizio Di Fuccia [difuccia@unisi.it](mailto:difuccia@unisi.it)

# COPY CATALOGING IN ALEPH500, VERSION 14.1

## METHODOLOGIES, PERSONALIZATIONS, PROBLEMS TO BE RESOLVED



This presentation, using concrete examples, illustrated the importation procedure of bibliographic records from external sources by utilizing the ALEPH 500, Version 14.1 client. The resources analyzed were the following: OPAC WEB data in export format UNIMARC, OPAC WEB data in export format MARC 21, and bibliographic databases in CD-ROM format and ALEPH format.

Liliana Bernardis  
[liliana.bernardis@amm.uniud.it](mailto:liliana.bernardis@amm.uniud.it)

Other programs implemented at the University of Udine were presented: the organization and normalization of copy cataloging records, and their correct integration into already present procedures.

In conclusion several difficulties encountered were described: problems arising from the multiplicity of codes in use across various systems, and the at times improper use of exportation formats.[L.B.]

# IMPORTING RECORDS IN ALEPH500

## EXAMPLES OF ROUTINE DEFINITIONS FOR THE ORGANIZATION AND CORRECTION OF THE DATA

Marco Bertolami's presentation analyzed the methodology of creating several fix-routines, currently realized and implemented at the University of Udine, for organizing and integrating derived (copy) cataloging data.

He specifically focussed on the server tables needing personalization, and the attention necessarily to be given to guarantee the proper insertion of new programs into a specific ALEPH 500 version. [L.B.]

